

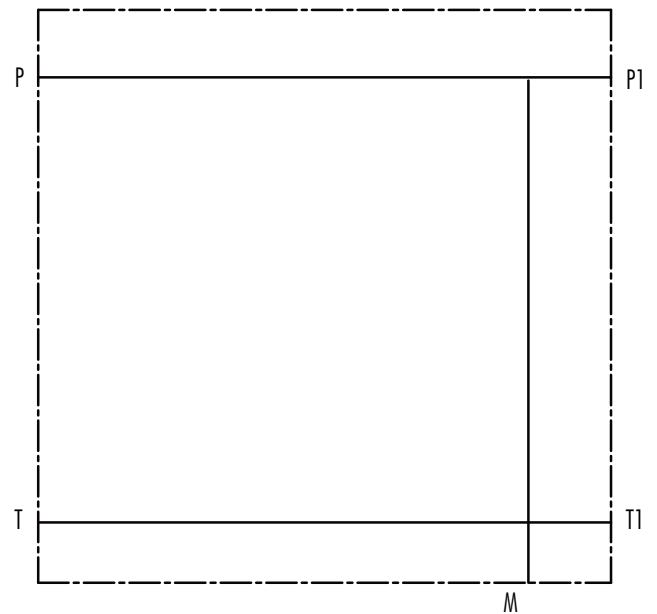
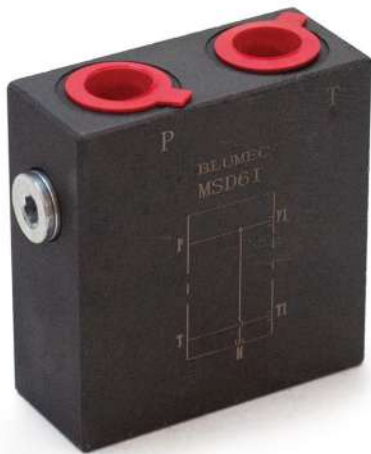


ELECTRO/MANUAL DIRECTION VALVES AND ACCESSORIES
CATALOGUE

MSD SERIES

MODULAR SOLENOID DIRECTIONAL

MSD6I



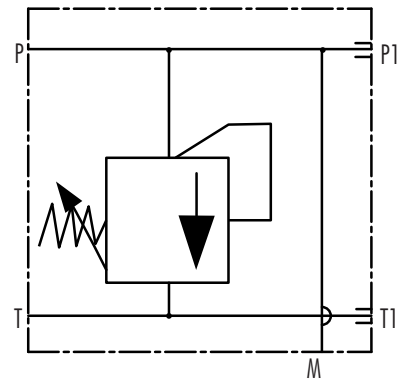
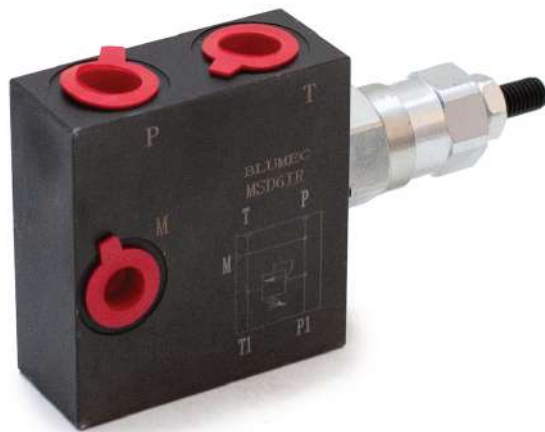
TECHNICAL DATA

Size	6
Max flow rate (L/min)	40
Max operating pressure (MPa)	25
Valve body (material Surface treatment)	(casting&phosphating surface
Oil cleanliness	NAS1638 and ISO4406 class 20/18/15

MSD SERIES

MODULAR SOLENOID DIVERTERS

MSD6IR



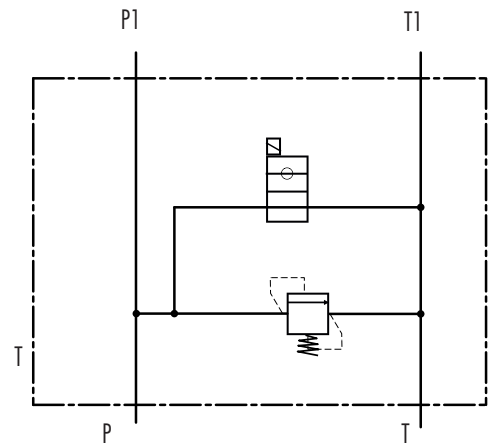
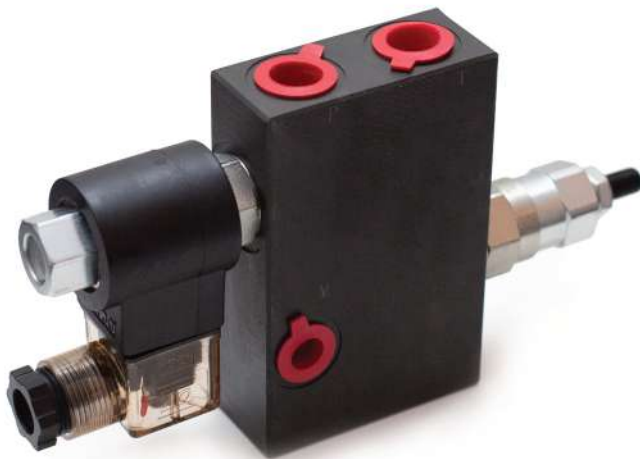
TECHNICAL DATA

Size	6
Max flow rate (L/min)	40
Max operating pressure (MPa)	25
Valve body (material Surface treatment)	(casting) phosphating surface
Oil cleanliness	NAS1638 and ISO4406 class 20/18/15

MSD SERIES

MODULAR SOLENOID DIVERTERS

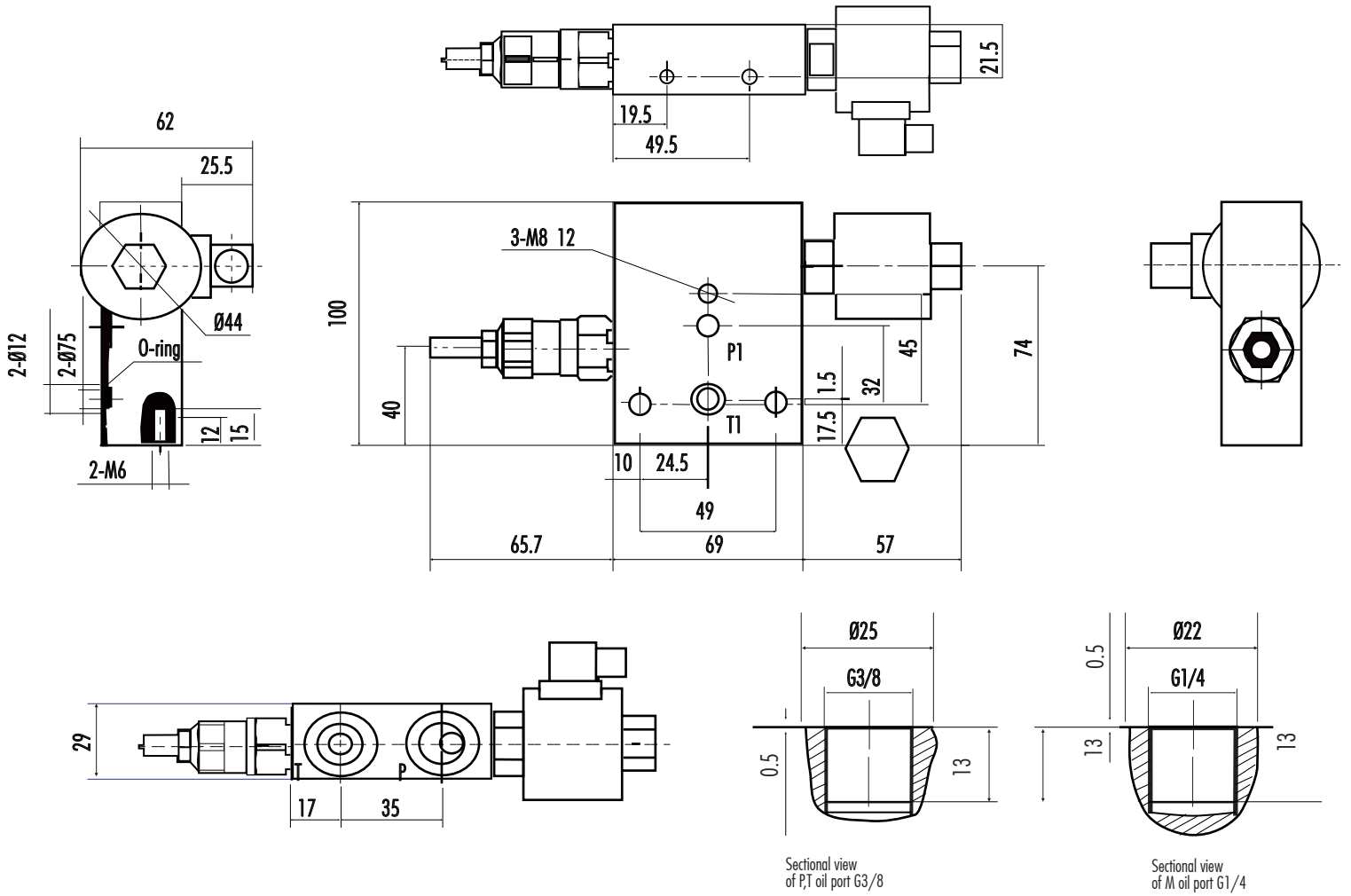
MSD6IRB



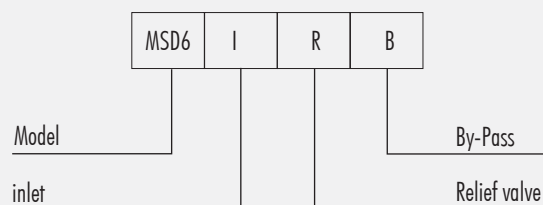
TECHNICAL DATA

Size	6
Max flow rate (L/min)	40
Max operating pressure (MPa)	25
Valve body (material Surface treatment)	(casting) phosphating surface
Oil cleanliness	NAS1638 class 9 and ISO4406 class 20/18/15

INSTALLATION DIMENSIONS



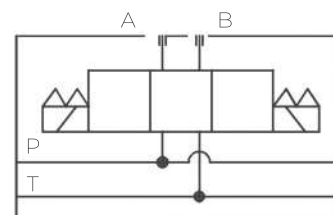
ORDERING DETAILS



MSD SERIES

MODULAR SOLENOID DIRECTIONAL

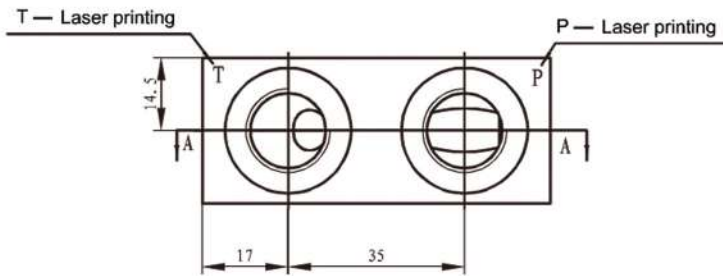
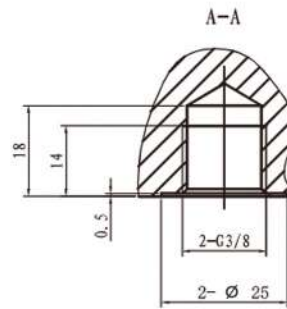
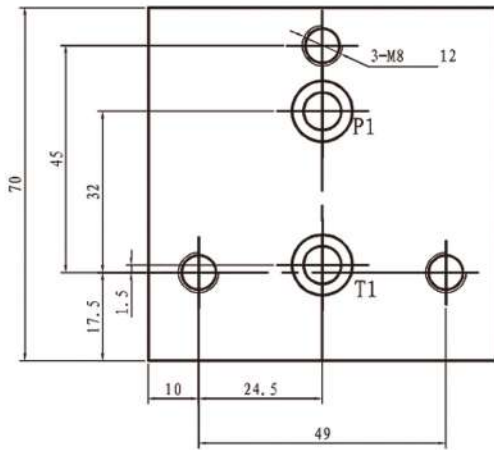
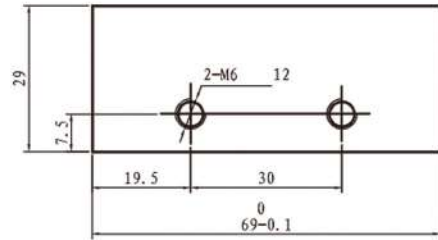
MSD60



TECHNICAL DATA

Size	6
Flow (L/min)	40
Max operating pressure (Bar)	31
Valve body	casting

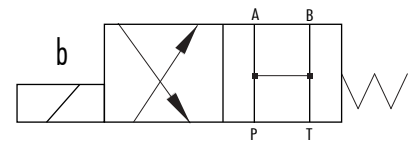
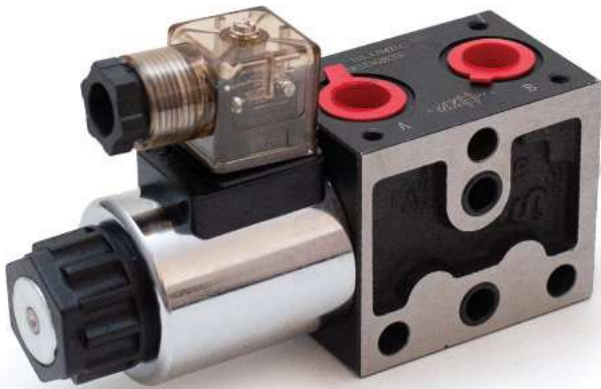
INSTALLATION DIMENSIONS



MSD SERIES

MODULAR SOLENOID DIRECTIONAL

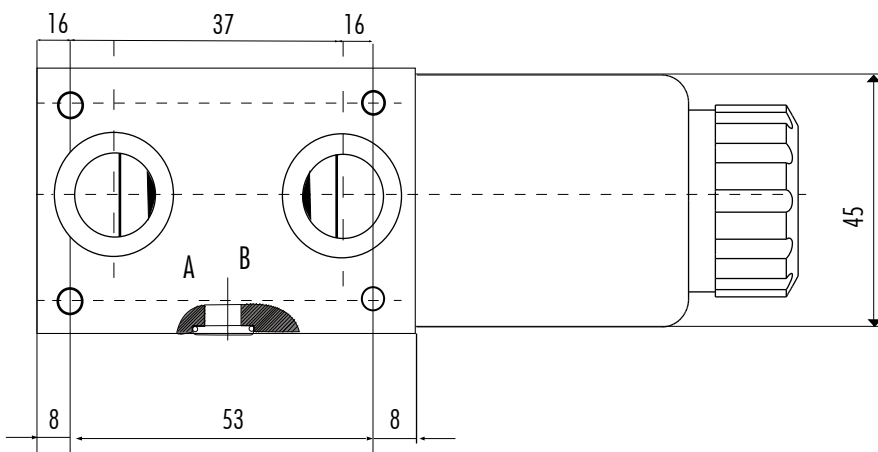
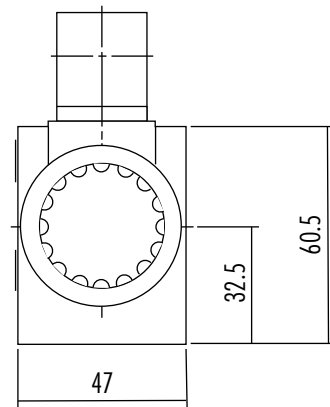
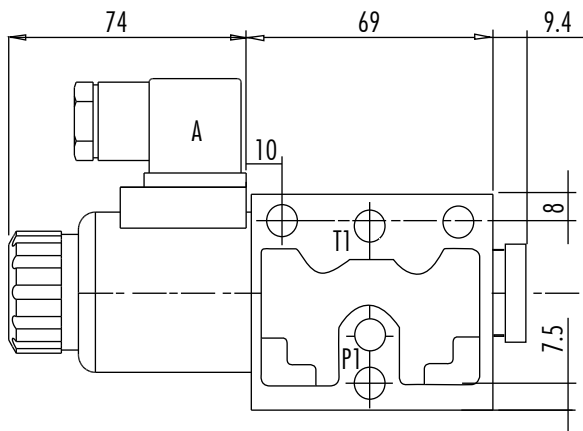
MSD6B3B



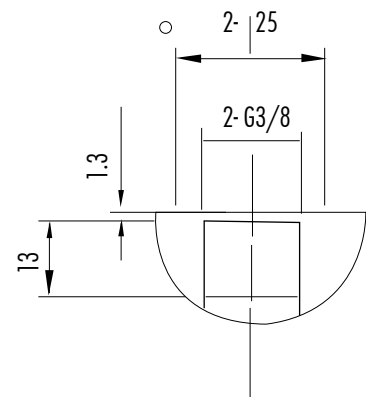
TECHNICAL DATA

Size	6
Flow (L/min)	40
Max operating pressure (Bar)	250
Valve body	casting

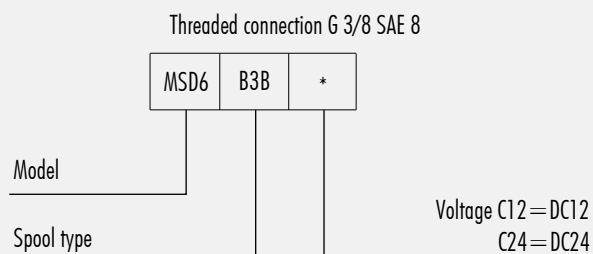
INSTALLATION DIMENSIONS



Sectional view of A,B oil port G3/8



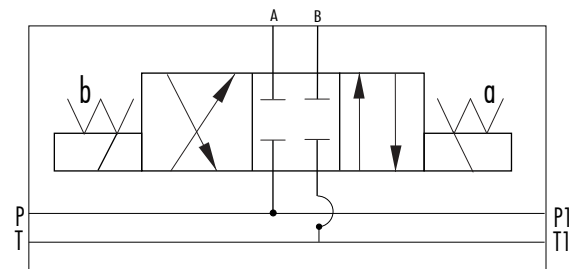
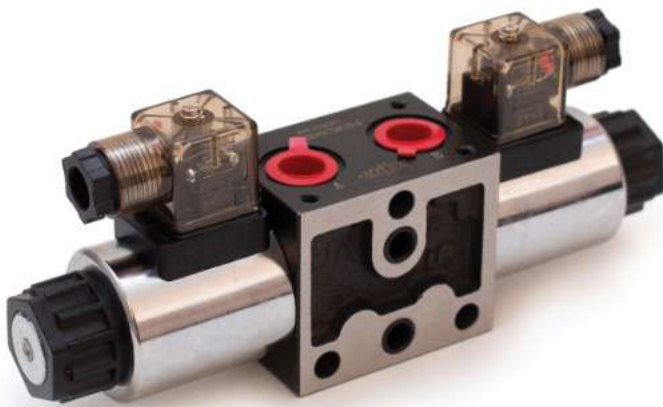
ORDERING DETAILS



MSD SERIES

MODULAR SOLENOID DIRECTIONAL

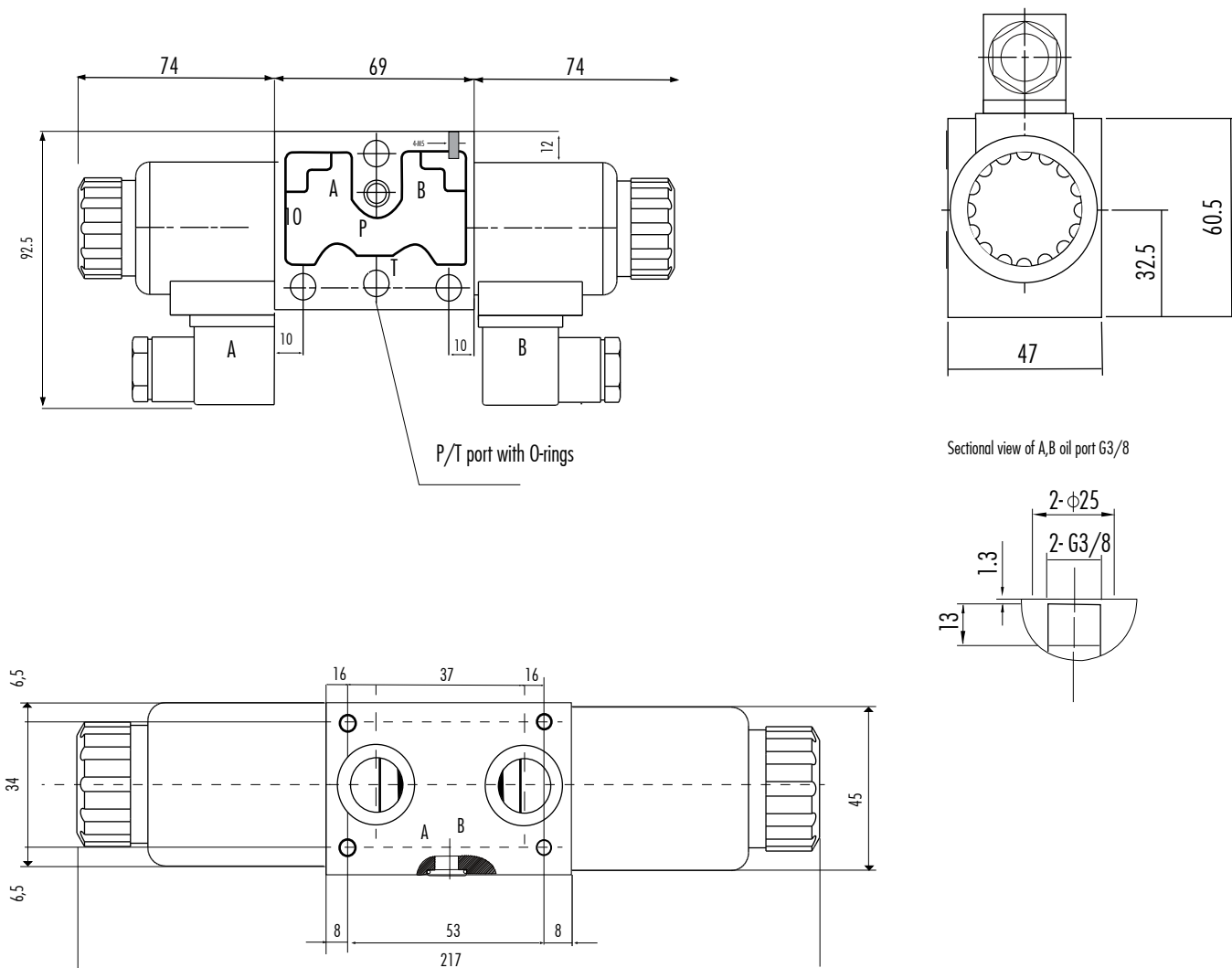
MSD 6C2



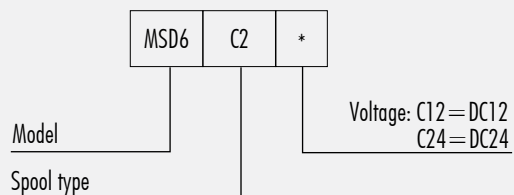
TECHNICAL DATA

Size	6
Max flow rate (L/min)	40
Max operating pressure (MPa)	250
Valve body	(casting)

INSTALLATION DIMENSIONS



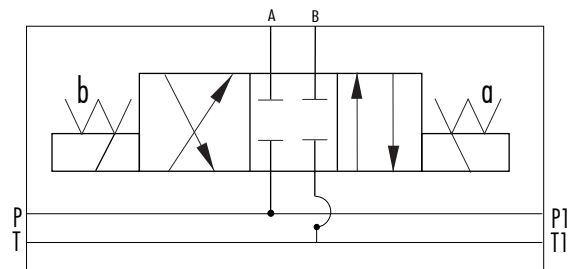
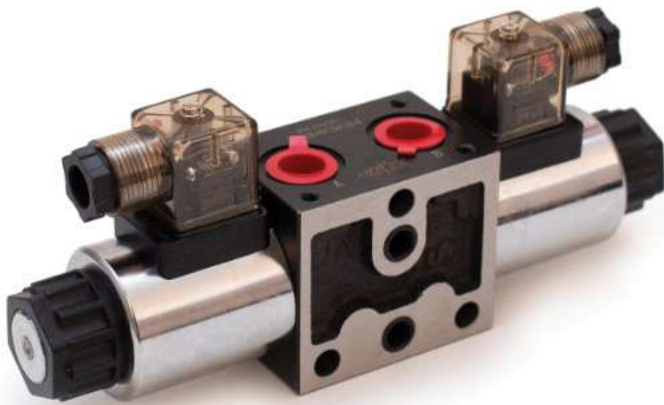
ORDERING DETAILS



MSD SERIES

MODULAR SOLENOID DIVERTERS

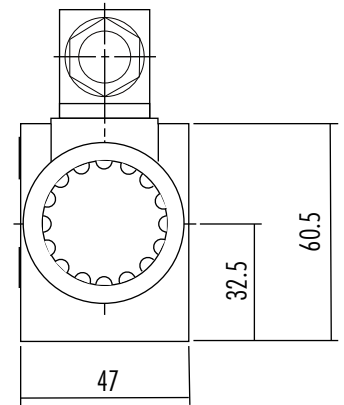
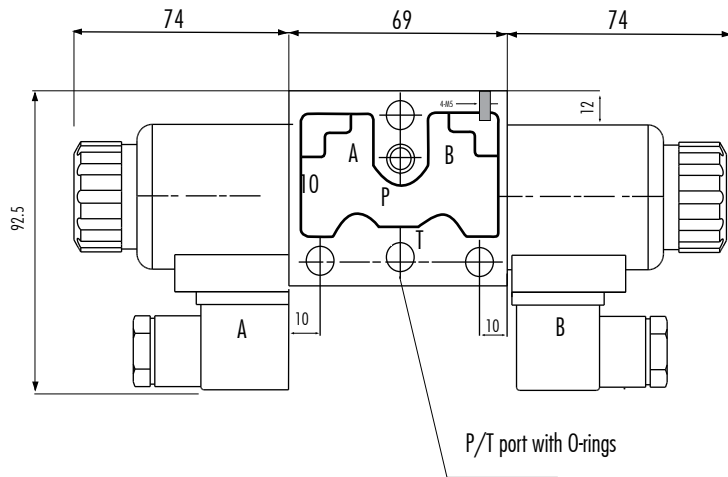
MSD6C4



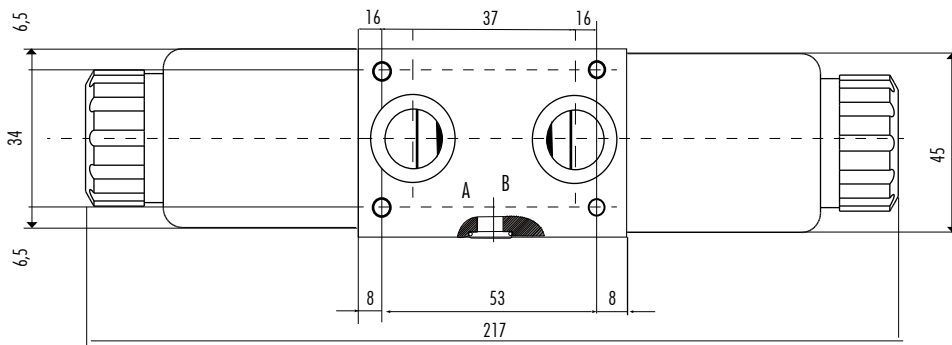
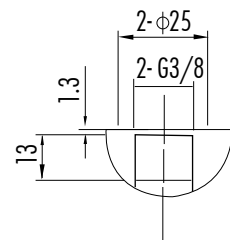
TECHNICAL DATA

Size	6
Max flow rate (L/min)	40
Max operating pressure (MPa)	250
Valve body	(casting)

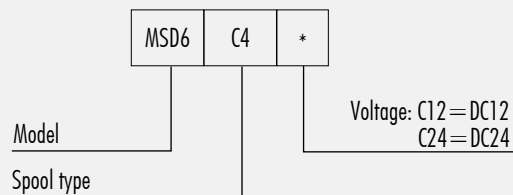
INSTALLATION DIMENSIONS



Sectional view of A, B oil port G3/8



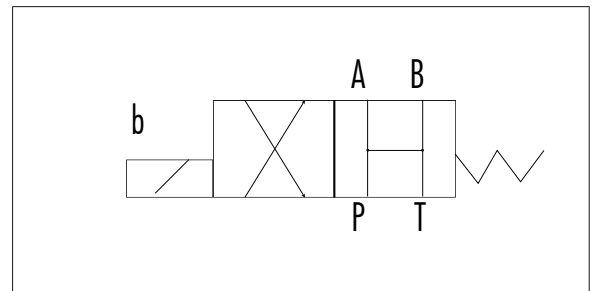
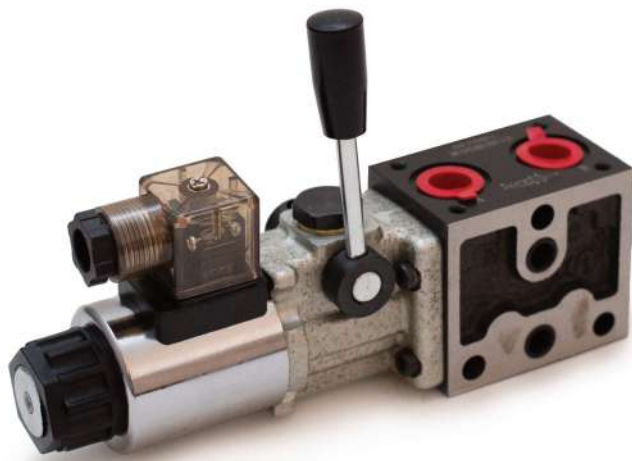
ORDERING DETAILS



MSD SERIES

MODULAR SOLENOID DIRECTIONAL

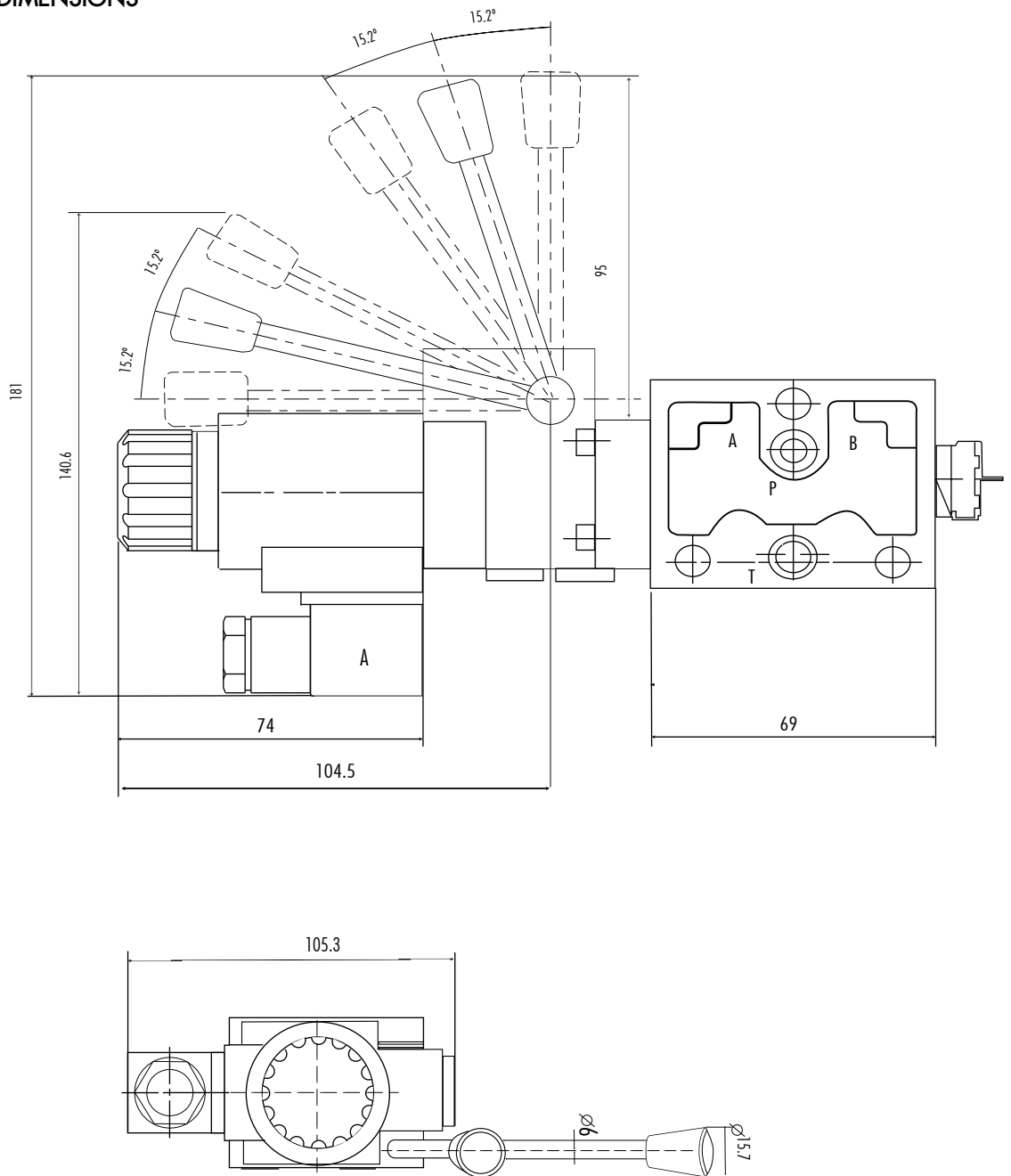
MSD6 MB3B



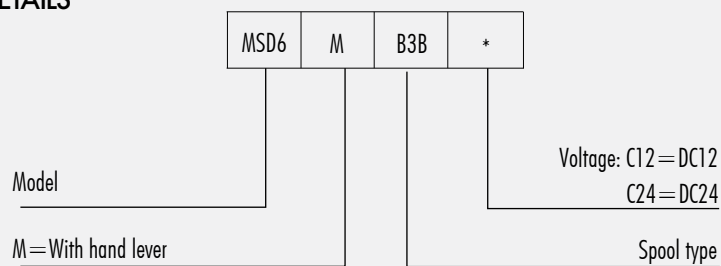
TECHNICAL DATA

Max flow rate (L/min)	40
Max operating pressure (MPa)	25
Valve body (material Surface treatment)	(casting) phosphating surface
Oil cleanliness	NAS1638 class 9 and ISO4406 class 20/18/15

INSTALLATION DIMENSIONS

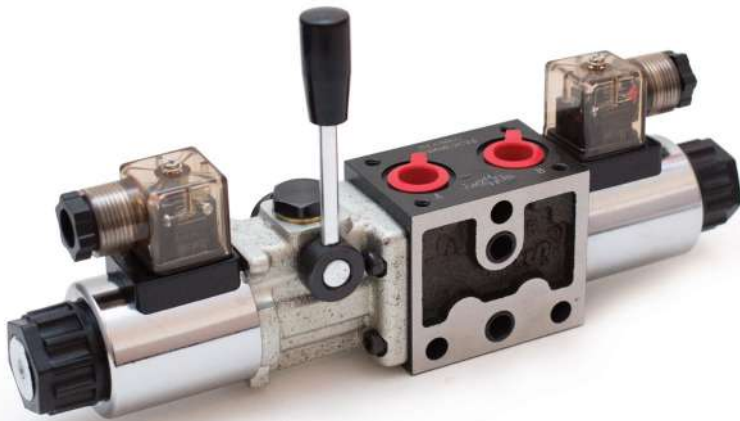


ORDERING DETAILS



MSD SERIES

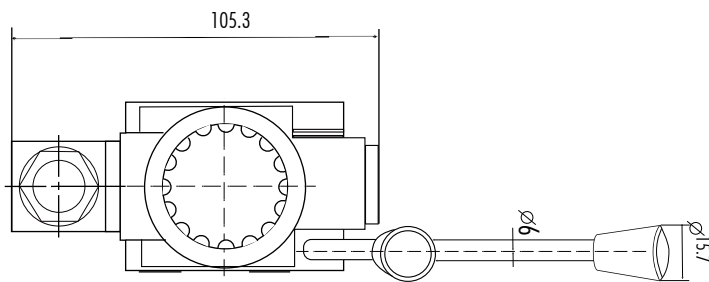
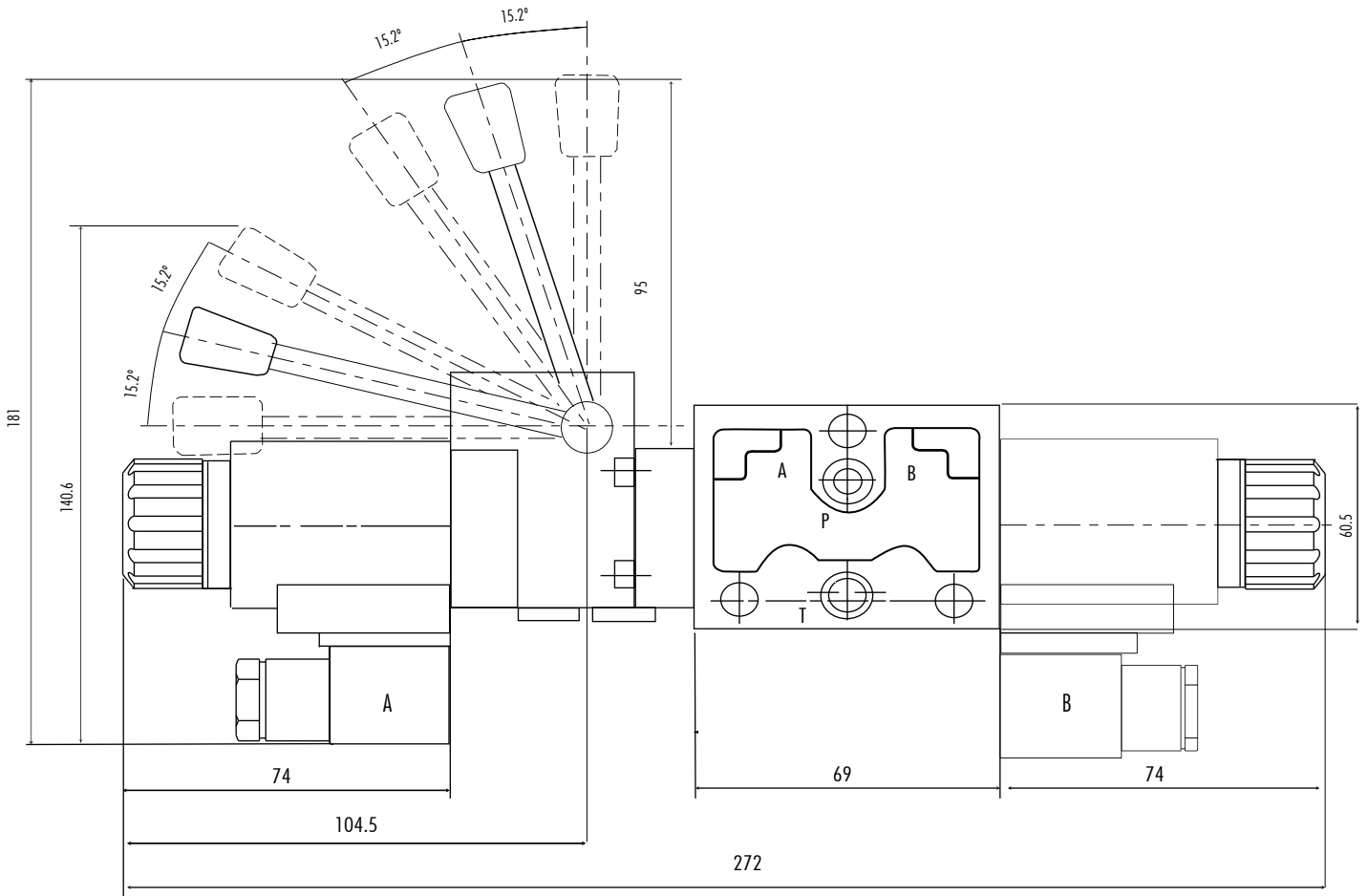
MODULAR SOLENOID DIRECTIONAL
MSD6 MC2



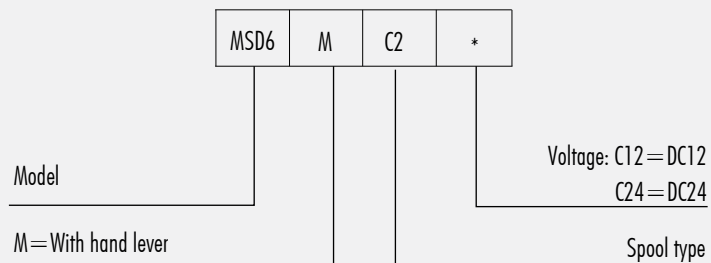
TECHNICAL DATA

Size	6
Max flow rate (L/min)	40
Max operating pressure (MPa)	25
Valve body (material Surface treatment)	casting
Oil cleanliness	NAS1638 class 9 and ISO4406 class 20/18/15

INSTALLATION DIMENSIONS



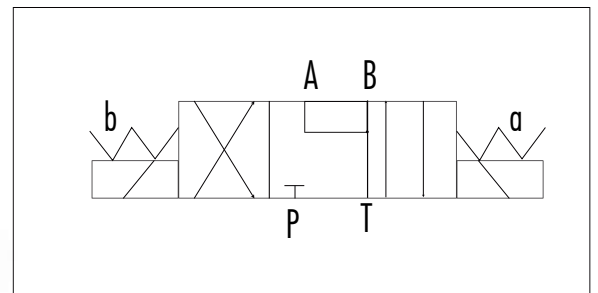
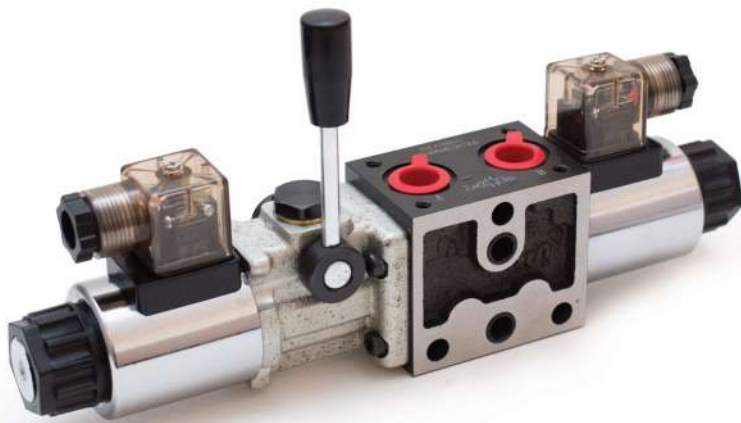
ORDERING DETAILS



MSD SERIES

MODULAR SOLENOID DIRECTIONAL

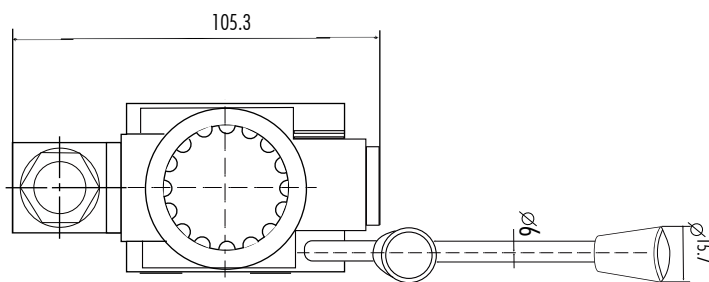
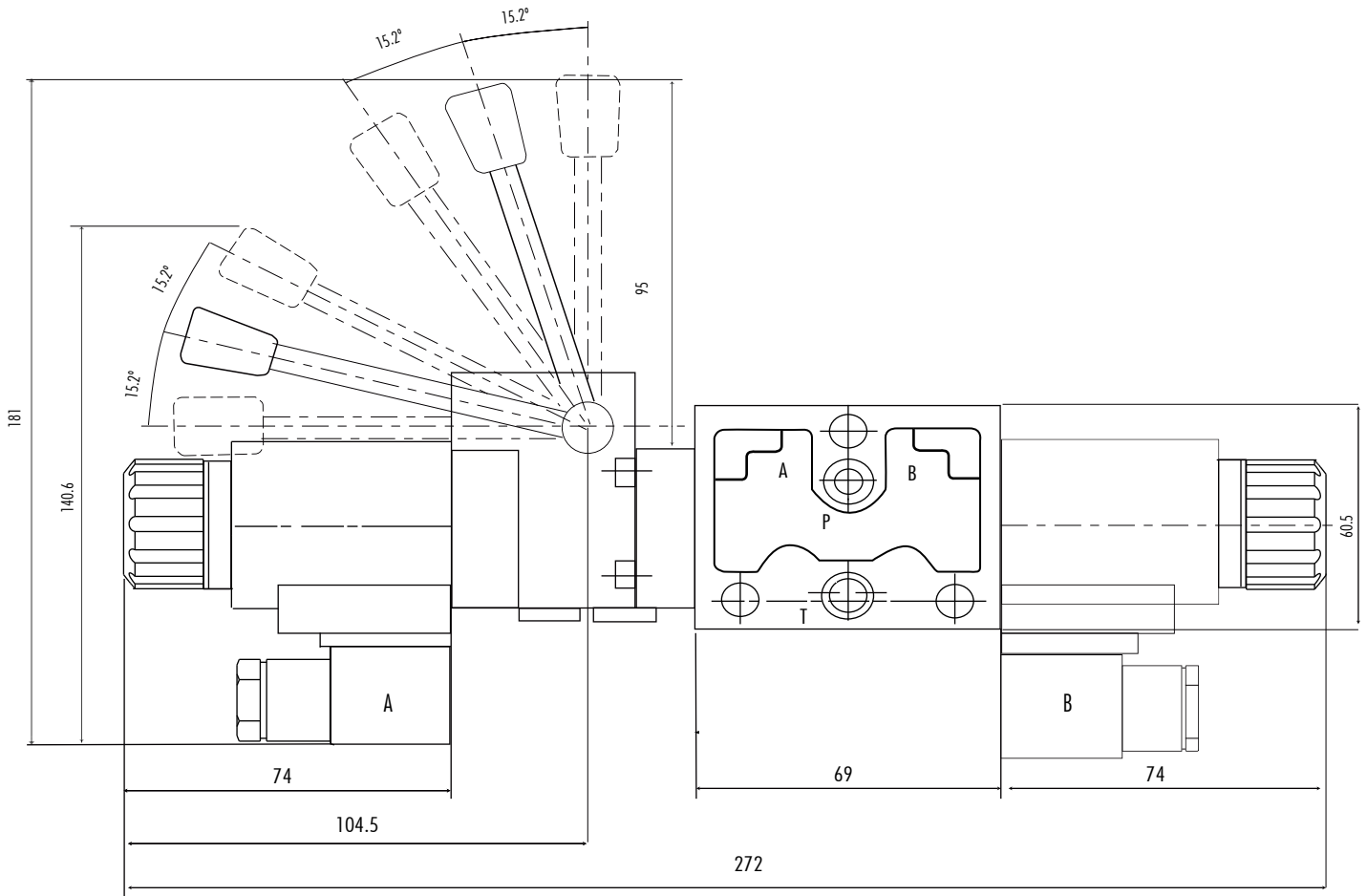
MSD6 MC4



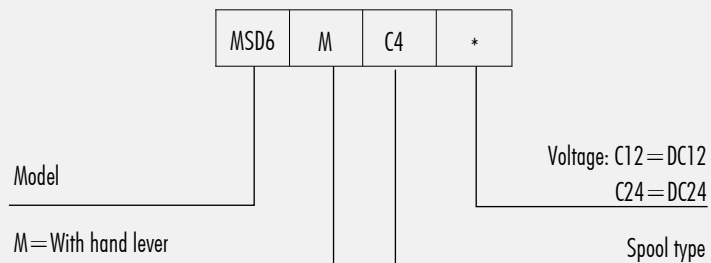
TECHNICAL DATA

Size	6
Max flow rate (L/min)	40
Max operating pressure (MPa)	25
Valve body (material Surface treatment)	casting

INSTALLATION DIMENSIONS



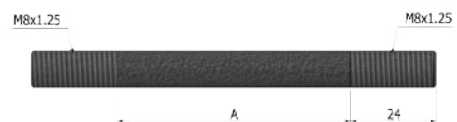
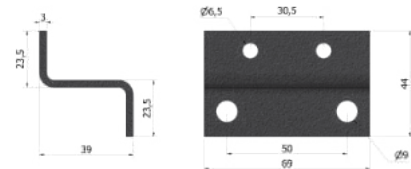
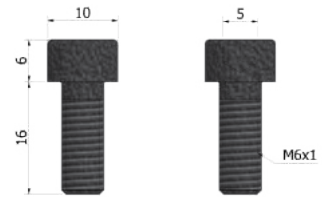
ORDERING DETAILS



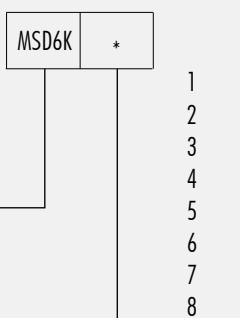
MSD SERIES

MODULAR SOLENOID DIRECTIONAL

MSD 6K



Model



Reference	Elements	A
	1	50
	2	97
	3	139
MSD6K	4	277
	5	277
	6	289
	7	328
	8	328

